

**Fund information**

Bloomberg ticker	EQTPGBW
ISIN	AU60ETL00188
APIR	ETL0018AU
Inception date	28 April 2004
Distribution	Quarterly
Management fee <sup>1</sup>	0.49% p.a.
Portfolio manager(s)	Sachin Gupta Andrew Balls Lorenzo Pagani
Total net assets (in millions)	6,211.9 AUD
Fund duration (yrs)	5.93
Benchmark duration (yrs)	7.06
Yield to maturity (%) <sup>2</sup>	4.11
Average coupon (%)	2.52
Average maturity (yrs)	7.41

<sup>1</sup>In addition to the Management Fee there may be other fees and costs associated with an investment in this fund. For a detailed explanation on fees and costs please refer to the Product Disclosure Statement. <sup>2</sup>Yield to Maturity (YTM) is the estimated annual rate of return that would be received if the Fund's current securities were all held to their maturity and all coupons and principal were made as contracted. YTM does not account for fees or taxes. YTM is not a forecast, and is not a guarantee of, the future return of the Fund. The Fund's actual return will depend on a range of factors, including fluctuations in the value of the Fund's securities held from time to time.

**Risk Profile**

Unit value can go up as well as down and any capital invested in the fund may be at risk. The fund may invest in foreign denominated and/or domiciled securities which involve potentially higher risks including currency fluctuations and political or economic developments. These may be enhanced when investing in emerging markets. Funds that invest in high-yield, lower-rated securities, will generally involve greater volatility and risk to principal than investments in higher-rated securities. The fund may use derivatives for hedging or as part of its investment strategy which may involve certain costs and risks. Portfolios investing in derivatives could lose more than the principal amount invested. For more details on the fund's potential risks, please read the PDS.

**IMPORTANT NOTICE**

Please note that this material contains the opinions of the manager as of the date noted, and may not have been updated to reflect real time market developments. All opinions are subject to change without notice.

**Sydney**

PIMCO Australia Pty Limited  
Level 19, 5 Martin Place  
Sydney, NSW, 2000  
1300 113 547  
investorservices@au.pimco.com

**Newport Beach Headquarters**

650 Newport Center Drive  
Newport Beach, CA 92660

[pimco.com.au](http://pimco.com.au)

**Performance summary**

The PIMCO Global Bond Fund returned 2.49% (Wholesale Class, net of fees) in July, and performed in line with the Bloomberg Global Aggregate Index (AUD Hedged). Year-to-date the Fund has returned -7.88% (Wholesale Class, net of fees), while the benchmark returned -7.15%.

Risk sentiment broadly rebounded in July amid elevated inflationary pressure and central bank tightening. Global equities rallied - with the Standard and Poor's 500 up 9.2% - credit spreads tightened, and energy prices gained. Developed sovereign yields broadly ended lower as central banks continued to prioritize addressing inflation, with the ECB increasing rates by 50 bps, its first rate hike in 11 years. Meanwhile, in the U.S., increasing recessionary risks pushed the 10-year Treasury yield down 36 bps to 2.65% even as the Fed increased rates by another 75 bps.

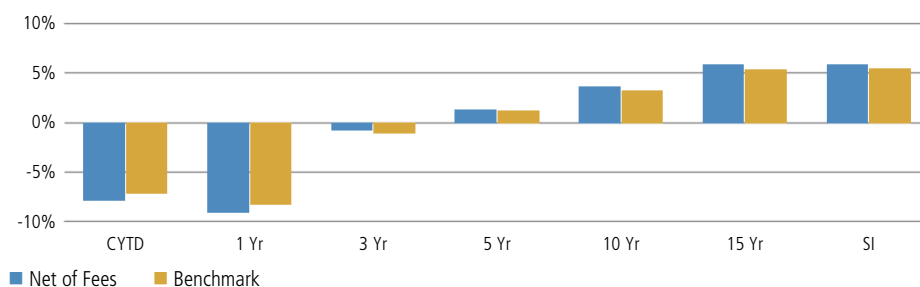
**Contributors**

- Overweight to senior and subordinated financials
- Overweight exposure to local rates in select EM countries, particularly Singapore and Thailand
- Overweight to duration in Australia

**Detractors**

- Underweight to non-financial investment grade corporate credit
- Underweight to duration in the U.S.
- Underweight to duration in the U.K.

**Performance**



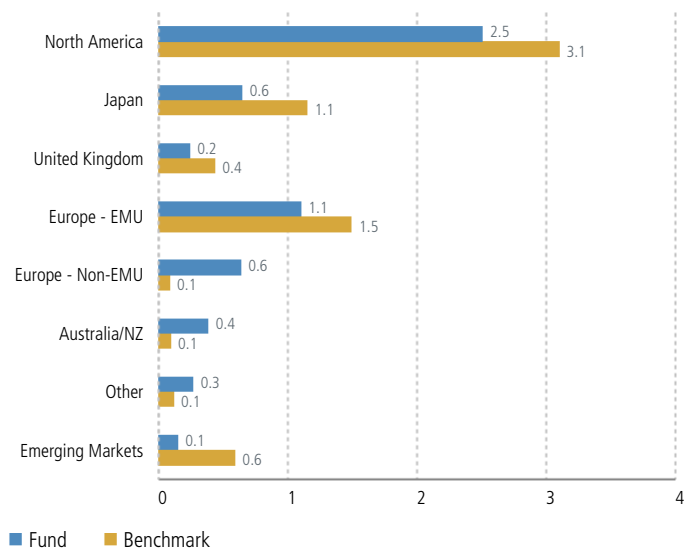
Performance	1 Mo	3 Mo	FYTD	1 Yr	3 Yr	5 Yr	10 Yr	SI
Net of Fees (%)	2.49	-0.33	2.49	-9.03	-0.77	1.27	3.57	5.86
Benchmark (%)	2.49	0.61	2.49	-8.23	-1.04	1.21	3.21	5.47
Outperformance (%)	0.00	-0.94	0.00	-0.80	0.27	0.06	0.36	0.39

**Past performance is not a reliable indicator of future results**

Returns for periods longer than 1 year are annualised  
Net of Fees - Fund performance is quoted net of fees and expenses and assumes the reinvestment of all distributions but does not take into account personal income tax  
SI is the performance since inception. Inception date is 28 April 2004  
The benchmark is the Bloomberg Global Aggregate Index (AUD Hedged)

For use by wholesale clients only (such as licensed financial advisers). This document must not be passed on or distributed to any retail clients within the meaning of the Corporations Act.

## Regional Exposure (by currency, Dur in Yrs)



The benchmark is the Bloomberg Global Aggregate Index (AUD Hedged)

## Portfolio positioning

The Fund is underweight to duration overall, including an underweight in the U.S. as we believe that rising inflationary pressures and quantitative tightening could place upward pressure on yields. In the Euro bloc, the Fund is overweight duration in aggregate with a focus on country selection. The Fund is overweight duration in Denmark and Switzerland, and is broadly underweight across the Eurozone, including peripheral countries such as Italy. The fund remains underweight to duration in the U.K.

The Fund is underweight to investment-grade corporate credit given our assessment of valuations. Instead, the Fund favors senior securitized assets, like non-Agency mortgages as well as U.K. residential mortgages and Danish covered bonds. The Fund also continues to hold positions in U.S. TIPS and what we consider to be high-quality EM external debt.

In currencies, the Fund is modestly short the U.S. dollar with exposure to select DM and EM currencies based on our view of relative value and valuations in commodity exposure.

## Month in review

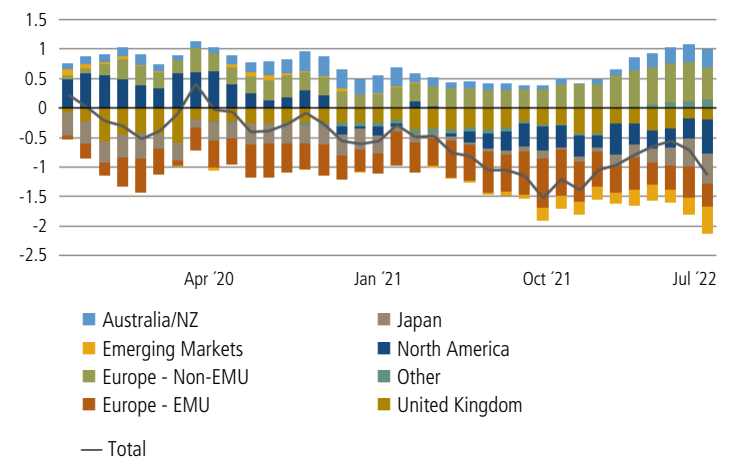
Risk sentiment broadly rebounded in July amid elevated inflationary pressure and central bank tightening. Global equities rallied - with the Standard and Poor's 500 up 9.2% credit spreads tightened, and energy prices gained. Developed sovereign yields broadly ended lower as central banks continued to prioritize addressing inflation, with the ECB increasing rates by 50 bps, its first rate hike in 11 years. Meanwhile, in the U.S., increasing recessionary risks pushed the 10-year Treasury yield down 36 bps to 2.65% even as the Fed increased rates by another 75 bps.

Sovereign rate strategies detracted modestly from relative performance over the month. Contributions from overweight exposure to local rates in select EM countries and an overweight to duration in Australia were more than offset by detractions from overweight exposure to duration in the U.S. and U.K.

Spread sector strategies were about neutral in relative performance over the month. Contributions from overweight exposure to senior and subordinated financials and overweight exposure to EM external debt modestly offset detractions from an overweight to non-financial investment grade credit.

Currency strategies contributed to relative performance over the month.

## Active Regional Exposure vs. Benchmark (by currency, Dur in Yrs)



The benchmark is the Bloomberg Global Aggregate Index (AUD Hedged)

## Outlook and strategy

Significant uncertainty clouds our outlook as the global economy confronts a shock that negative for growth and may spur further inflation. In our base case, growth may remain supported by the post-pandemic economic reopening and pent-up savings, potentially bolstering demand, and inflation may peak in the next few months and then may moderate gradually.

In this uncertain environment, we favor portfolio flexibility and liquidity to respond to events and potentially take advantage of opportunities. We are underweight duration in the Fund as, in our view, central banks globally remain focused on inflation risks, potentially contributing to elevated volatility. From a country standpoint, we favor taking duration in select Euro bloc (Denmark, Switzerland) and dollar Bloc countries (Australia, New Zealand, and Canada) vs. the UK and Japan. We continue to hold a moderate allocation to TIPS in the portfolio based on what we consider to be attractive valuations and as a hedge against a potential inflation overshoot. We are moderately underweight the U.S. dollar with exposure to select developed and emerging market currencies that we consider may benefit from rising commodity prices.

In spread sectors, we continue to be selective within corporate credit, favoring banks and other financial issuers. We remain focused on securitized assets, including U.S. non-agency mortgages, U.K. residential mortgages, and Danish mortgages, which we believe may offer defensive qualities in addition to reasonable risk premia for liquidity, complexity, and uncertainty over the timing of cash flows. We also continue to hold what we consider to be high quality EM external debt of sovereign and quasi-sovereign issuers in the Middle East.

## DISCLAIMER

This publication is intended to be general advice only. Retail clients should seek advice from their financial adviser before making an investment decision. **Past performance is not a reliable indicator of future results.** Interests in any PIMCO fund mentioned in this publication are issued by PIMCO Australia Management Limited ABN 37 611 709 507, AFSL 487 505 of which PIMCO Australia Pty Ltd ABN 54 084 280 508, AFSL 246 862 is the investment manager (together **PIMCO Australia**). This publication has been prepared without taking into account the objectives, financial situation or needs of investors. Before making an investment decision investors should obtain professional advice and consider whether the information contained herein is appropriate having regard to their objectives, financial situation and needs. Investors should obtain a copy of the Product Disclosure Statement (**PDS**) and consider the PDS before making any decision about whether to acquire an interest in any PIMCO fund mentioned in this publication. PIMCO Australia has determined the target market for this product which is set out in the target market determination (**TMD**) published on our website. The current PDS and TMD can be obtained via [www.pimco.com.au](http://www.pimco.com.au). This publication may include economic and market commentaries based on proprietary research, which are for general information only. PIMCO Australia believes the information contained in this publication to be reliable, however its accuracy, reliability or completeness is not guaranteed. Any opinions or forecasts reflect the judgment and assumptions of PIMCO Australia on the basis of information at the date of publication and may later change without notice. These should not be taken as a recommendation of any particular security, strategy or investment product. All investments carry risk and may lose value. To the maximum extent permitted by law, PIMCO Australia and each of their directors, employees, agents, representatives and advisers disclaim all liability to any person for any loss arising, directly or indirectly, from the information in this publication. No part of this publication may be reproduced in any form, or referred to in any other publication, without express written permission of PIMCO Australia. PIMCO is a trademark of Allianz Asset Management of America L.P. in the United States and throughout the world. © PIMCO, 2022.

To the extent this publication includes references to Pacific Investment Management Co LLC (**PIMCO LLC**) and/or any information regarding funds issued by PIMCO LLC and/or its associates, such references are to PIMCO LLC (and/or its associates, as the context requires) as the investment manager of the fund, and not as the issuer of the fund. PIMCO LLC is exempt from the requirement to hold an Australian financial services licence under the Corporations Act 2001. PIMCO LLC is regulated by the Securities and Exchange Commission under US law, which differ from Australian law. PIMCO LLC is only authorised to provide financial services to wholesale clients in Australia.

**Additional information:** This material may contain additional information, not explicit in the prospectus, on how the Fund or strategy is currently managed. Such information is current as at the date of the material and may be subject to change without notice.

**Benchmark:** Unless otherwise stated in the prospectus or in the relevant key investor information document, the Fund referenced in this material is not managed against a particular benchmark or index, and any reference to a particular benchmark or index in this material is made solely for risk or performance comparison purposes.

**Correlation:** Correlation is a statistical measure of how two securities move in relation to each other. The correlation of various indexes or securities against one another or against inflation is based upon data over a certain time period. These correlations may vary substantially in the future or over different time periods that can result in greater volatility.

**Credit Quality:** The credit quality of a particular security or group of securities does not ensure the stability or safety of an overall portfolio. The quality ratings of individual issues/issuers are provided to indicate the credit worthiness of such issues/issuer and generally range from AAA, Aaa, or AAA (highest) to D, C, or D (lowest) for S

**Diversification:** Diversification does not ensure against losses.

**Duration:** Duration is the measure of a bond's price sensitivity to interest rates and is expressed in years.

**Fluctuation:** There can be no guarantee that the trends above will continue. Statements concerning financial market trends are based on current market conditions, which will fluctuate.

**Forecast:** These forecasts are predictive in nature. Actual results may differ materially from these projections.

All periods longer than one year are annualised.

Certain information contained in this material constitutes "forward-looking statements," which can be identified by the use of forward-looking terminology such as "may," "will," "should," "expect," "anticipate," "target," "project," "estimate," "intend," "continue," or "believe," or the negatives thereof or other variations thereon or comparable terminology. Due to various risks and uncertainties, actual events or results or the actual performance of any investment may differ from those reflected or contemplated in such forward-looking statements. Prospective investors should not rely on these forward-looking statements when making an investment decision.

**Index:** It is not possible to invest directly in an unmanaged index.

**Investment Strategies:** There is no guarantee that these investment strategies will work under all market conditions and each investor should evaluate their ability to invest for a long-term especially during periods of downturn in the market. No representation is being made that any account, product, or strategy will or is likely to achieve profits, losses, or results similar to those shown.

**Issuer:** The issuers referenced are examples of issuers PIMCO considers to be well known and that may fall into the stated sectors. References to specific securities and their issuers are not intended and should not be interpreted as recommendations to purchase, sell or hold such securities. PIMCO products and strategies may or may not include the securities referenced and, if such securities are included, no representation is being made that such securities will continue to be included.

**Opinions:** The materials contain statements of opinion and belief. Any views expressed herein are those of PIMCO as of the date indicated, are based on information available to PIMCO as of such date, and are subject to change, without notice, based on market and other conditions. No representation is made or assurance given that such views are correct. PIMCO has no duty or obligation to update the information contained herein.

Certain information contained herein concerning economic trends and/or data is based on or derived from information provided by independent third-party sources. PIMCO believes that the sources from which such information has been obtained are reliable; however, it cannot guarantee the accuracy of such information and has not independently verified the accuracy or completeness of such information or the assumptions on which such information is based.

**Outlook:** Statements concerning financial market trends or portfolio strategies are based on current market conditions, which will fluctuate. There is no guarantee that these investment strategies will work under all market conditions or are suitable for all investors and each investor should evaluate their ability to invest for the long term, especially during periods of downturn in the market. Outlook and strategies are subject to change without notice.

**Portfolio Construction:** The portfolio construction allocation process and the fund structure presented are intended to illustrate sectors in which the fund may invest. The allocations and/or structure are subject to change.

**Portfolio Optimization:** Optimized and optimal portfolios described may not be suitable for all investors and each investor should evaluate their ability to invest for the long-term, especially during periods of downturn in the market. Outlook and strategies are subject to change without notice.

Statements concerning financial market trends are based on current market conditions, which will fluctuate. There is no guarantee that these investment strategies will work under all market conditions or are suitable for all investors and each investor should evaluate their ability to invest for the long-term, especially during periods of downturn in the market. Outlook and strategies are subject to change without notice.

The views and strategies described may not be suitable for all investors. This material has been prepared for informational purposes only, and is not intended to provide, and should not be relied on for, accounting, legal or tax advice. You should consult your tax or legal advisor regarding such matters. Please contact your account manager for further information.

**Portfolio Structure:** No guarantee is being made that the structure of the portfolio will remain the same or that similar returns will be achieved. Portfolio structure is subject to change without notice and may not be representative of current or future allocations.

**Risk:** Investing in the bond market is subject to risks, including market, interest rate, issuer, credit, inflation risk, and liquidity risk. The value of most bonds and bond strategies are impacted by changes in interest rates. Bonds and bond strategies with longer durations tend to be more sensitive and volatile than those with shorter durations; bond prices generally fall as interest rates rise, and the current low interest rate environment increases this risk. Current reductions in bond counterparty capacity may contribute to decreased market liquidity and increased price volatility. Bond investments may be worth more or less than the original cost when redeemed. Commodities contain heightened risk, including market, political, regulatory and natural conditions, and may not be suitable for all investors. Currency rates may fluctuate significantly over short periods of time and may reduce the returns of a portfolio. Derivatives may involve certain costs and risks, such as liquidity, interest rate, market, credit, management and the risk that a position could not be closed when most advantageous. Investing in derivatives could lose more than the amount invested. Equities may decline in value due to both real and perceived general market, economic and industry conditions.

Investing in foreign-denominated and/or -domiciled securities may involve heightened risk due to currency fluctuations, and economic and political risks, which may be enhanced in emerging markets. Sovereign securities are generally backed by the issuing government. Obligations of U.S. government agencies and authorities are supported by varying degrees, but are generally not backed by the full faith of the U.S. government. Portfolios that invest in such securities are not guaranteed and will fluctuate in value. High yield, lower-rated securities involve greater risk than higher-rated securities; portfolios that invest in them may be subject to greater levels of credit and liquidity risk than portfolios that do not.

Mortgage- and asset-backed securities may be sensitive to changes in interest rates, subject to early repayment risk, and while generally supported by a government, government-agency or private guarantor, there is no assurance that the guarantor will meet its obligations. Income from municipal bonds may be subject to state and local taxes and at times the alternative minimum tax. Swaps are a type of derivative; swaps are increasingly subject to central clearing and exchange-trading. Swaps that are not centrally cleared and exchange-traded may be less liquid than exchange-traded instruments. Inflation-linked bonds (ILBs) issued by a government are fixed income securities whose principal value is periodically adjusted according to the rate of inflation; ILBs decline in value when real interest rates rise. Treasury Inflation-Protected Securities (TIPS) are ILBs issued by the U.S. government. Certain U.S. government securities are backed by the full faith of the government. Obligations of U.S. government agencies and authorities are supported by varying degrees but are generally not backed by the full faith of the U.S. government. Portfolios that invest in such securities are not guaranteed and will fluctuate in value.

**Securities Referenced:** References to specific securities and their issuers are for illustrative purposes only and are not intended and should not be interpreted as recommendations to purchase or sell such securities.

No guarantee is being made that the structure or actual account holdings of any account will remain the same. PIMCO may or may not own the securities referenced and, if such securities are owned, no representation is being made that such securities will continue to be held.

**Strategy Availability:** Strategy availability may be limited to certain investment vehicles; not all investment vehicles may be available to all investors. Please contact your PIMCO representative for more information.

Currency strategies are volatile and currency rates may fluctuate significantly over short periods of time and may reduce the returns of a portfolio.

Standard and Poor's 500 (S&P)

Bloomberg Global Aggregate Index (AUD Hedged) is an unmanaged market index representative of the total return performance of major world bond markets on a AUD hedged basis. It is not possible to invest in an unmanaged index.