

Fund information

Bloomberg ticker	EQTPGBW
ISIN	AU60ETL00188
APIR	ETL0018AU
Inception date	28 April 2004
Distribution	Quarterly
Management fee ¹	0.49% p.a.
Portfolio manager(s)	Sachin Gupta Andrew Balls Lorenzo Pagani
Total net assets (in millions)	7,240.4 AUD
Fund duration (yrs)	6.37
Benchmark duration (yrs)	7.34
Yield to maturity (%) ²	2.29
Average coupon (%)	1.92
Average maturity (yrs)	8.09

¹In addition to the Management Fee there may be other fees and costs associated with an investment in this fund. For a detailed explanation on fees and costs please refer to the Product Disclosure Statement. ²Yield to Maturity (YTM) is the estimated annual rate of return that would be received if the Fund's current securities were all held to their maturity and all coupons and principal were made as contracted. YTM does not account for fees or taxes. YTM is not a forecast, and is not a guarantee of, the future return of the Fund. The Fund's actual return will depend on a range of factors, including fluctuations in the value of the Fund's securities held from time to time.

Risk Profile

Unit value can go up as well as down and any capital invested in the fund may be at risk. The fund may invest in foreign denominated and/or domiciled securities which involve potentially higher risks including currency fluctuations and political or economic developments. These may be enhanced when investing in emerging markets. Funds that invest in high-yield, lower-rated securities, will generally involve greater volatility and risk to principal than investments in higher-rated securities. The fund may use derivatives for hedging or as part of its investment strategy which may involve certain costs and risks. Portfolios investing in derivatives could lose more than the principal amount invested. For more details on the fund's potential risks, please read the PDS.

IMPORTANT NOTICE

Please note that this material contains the opinions of the manager as of the date noted, and may not have been updated to reflect real time market developments. All opinions are subject to change without notice.

Sydney

PIMCO Australia Pty Limited
Level 19, 5 Martin Place
Sydney, NSW, 2000
1300 113 547
investorservices@au.pimco.com

Newport Beach Headquarters

650 Newport Center Drive
Newport Beach, CA 92660

pimco.com.au

Performance summary

The PIMCO Global Bond Fund returned -1.52% (Wholesale Class, net of fees) in February versus the Bloomberg Global Aggregate Index (AUD Hedged), which returned -1.30%. Year-to-date the Fund has returned -2.78% (Wholesale Class, net of fees), outperforming the benchmark by 0.13%.

Risk appetites declined in February amid escalating conflict between Russia and Ukraine coupled with elevated inflation risks. Global equities fell - with the S&P down -3.0% - credit spreads widened, and energy prices rose meaningfully. Though developed sovereign yields broadly ended higher, they rose during the first half of the month as inflation exceeded expectations, but fell as geopolitical tensions increased demand for safe-haven assets. Meanwhile, the U.S. 10-year Treasury yield rose 5 bps to 1.83%.

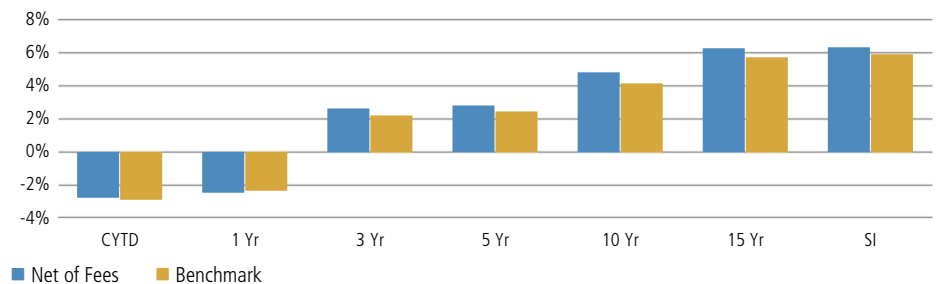
Contributors

- An underweight to non-financial investment-grade corporate credit
- Positioning in Agency MBS
- Underweight to duration in Russia

Detractors

- Overweight to duration in Denmark
- Positions in non-Agency MBS
- Overweight to senior and subordinated financials

Performance



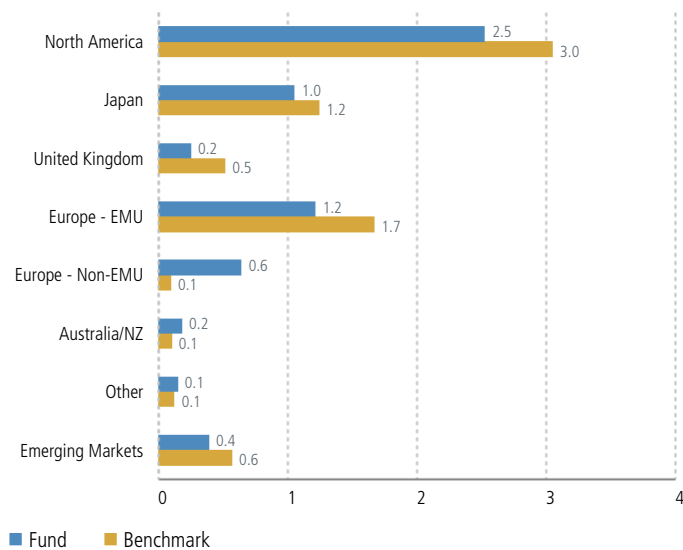
Performance	1 Mo	3 Mo	FYTD	1 Yr	3 Yr	5 Yr	10 Yr	SI
Net of Fees (%)	-1.52	-2.90	-2.98	-2.46	2.61	2.78	4.79	6.32
Benchmark (%)	-1.30	-3.34	-2.83	-2.33	2.15	2.43	4.12	5.86
Outperformance (%)	-0.22	0.44	-0.15	-0.13	0.46	0.35	0.67	0.46

Past performance is not a reliable indicator of future results

Returns for periods longer than 1 year are annualised
Net of Fees - Fund performance is quoted net of fees and expenses and assumes the reinvestment of all distributions but does not take into account personal income tax
SI is the performance since inception. Inception date is 28 April 2004
The benchmark is the Bloomberg Global Aggregate Index (AUD Hedged)

For use by wholesale clients only (such as licensed financial advisers). This document must not be passed on or distributed to any retail clients within the meaning of the Corporations Act.

Regional Exposure (by currency, Dur in Yrs)



The benchmark is the Bloomberg Global Aggregate Index (AUD Hedged)

Portfolio positioning

The Fund is underweight to duration overall, including an underweight in the U.S., as we expect that factors such as reduced monetary support and increased growth and inflation expectations could place upward pressure on yields over time. In the Eurozone, the Fund is underweight to duration in aggregate, with an overweight in the peripherals and an underweight in the core and semi-core regions. The Fund remains underweight to duration in the U.K., and neutral to duration in Japan and Australia.

The Fund is underweight to investment-grade corporate credit given tight valuations. Instead, the Fund favors senior securitized assets, like non-Agency mortgages as well as U.K. residential mortgages and Danish covered bonds. The Fund also continues to hold positions in U.S. TIPS and high-quality EM external debt.

In currencies, the Fund is short the U.S. dollar with exposure to select DM and EM currencies based on valuations, favorable terms of trade dynamics, and relative monetary policy expectations.

Month in review

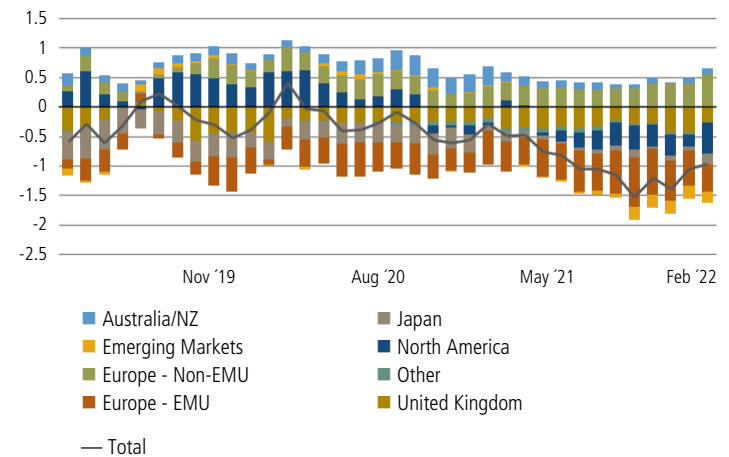
Risk appetites declined in February amid escalating conflict between Russia and Ukraine coupled with elevated inflation risks. Global equities fell - with the S&P down -3.0% - credit spreads widened, and energy prices rose meaningfully. Though developed sovereign yields broadly ended higher, they rose during the first half of the month as inflation exceeded expectations, but fell as geopolitical tensions increased demand for safe-haven assets. Meanwhile, the U.S. 10-year Treasury yield rose 5 bps to 1.83%.

Sovereign rate strategies contributed to relative performance over the month. Contributions from an underweight to duration in Russia more than offset detractions from an overweight to duration in Denmark and an underweight to duration in the Eurozone.

Spread sector strategies detracted modestly from relative performance over the month. Contributions from an underweight to non-financial investment-grade corporate credit and positioning in Agency MBS more than offset detractions from positions in senior and subordinated financials and non-Agency MBS.

Currency strategies were neutral for relative performance over the month.

Active Regional Exposure vs. Benchmark (by currency, Dur in Yrs)



The benchmark is the Bloomberg Global Aggregate Index (AUD Hedged)

Outlook and strategy

In 2022, we anticipate the global growth rebound may give way to a synchronized moderation, albeit to a still above-trend pace. As returns across asset classes may be lower and more volatile going forward given starting valuations today and key secular drivers, we remain focused on careful portfolio positioning, capital preservation, and liquidity management.

By positioning cautiously and emphasizing liquidity, we believe we could be better prepared to respond to a variety of shocks. We are underweight duration in the Fund as central banks globally remain focused on inflation risks, contributing to elevated volatility. In Europe, accommodative ECB action suggests a more favorable view on peripheral eurozone rates relative to those of core and semi-core. We continue to hold a moderate allocation to TIPS in the portfolio based on attractive valuations and as a hedge against a potential inflation overshoot. We are short the U.S. dollar with exposure to select developed and emerging market currencies based on valuations, favorable terms of trade dynamics and relative monetary policy expectations.

In spread sectors, we continue to be selective within corporate credit, favoring banks and other financial issuers. We remain focused on securitized assets, including U.S. non-agency mortgages, U.K. residential mortgages, and Danish mortgages, which offer defensive qualities in addition to reasonable risk premia for liquidity, complexity, and uncertainty over the timing of cash flows. We also continue to hold high quality EM external debt of sovereign and quasi-sovereign issuers in the Middle East.

G10 positions refers to G10 currencies: U.S. dollar, euro, British pound, Japanese yen, Australian dollar, New Zealand dollar, Canadian dollar, Swiss franc, Norwegian krone and Swedish krona.

Currency strategies are volatile and currency rates may fluctuate significantly over short periods of time and may reduce the returns of a portfolio.

DISCLAIMER:

This publication is intended to be general advice only. Retail clients should seek advice from their financial adviser before making an investment decision.

Additional Information: This material may contain additional information, not explicit in the prospectus, on how the Fund or strategy is currently managed. Such information is current as at the date of the material and may be subject to change without notice.

Beta: Beta is a measure of price sensitivity to market movements. Market beta is 1.

Diversification: Diversification does not ensure against losses.

Duration: Duration is the measure of a bond's price sensitivity to interest rates and is expressed in years.

Fluctuations: There can be no guarantee that the trends above will continue. Statements concerning financial market trends are based on current market conditions, which will fluctuate.

Forecasts: Forecasts are based on proprietary research and should not be interpreted as investment advice, as an offer or solicitation, nor the purchase or sale of any financial instrument.

Investment Strategies: There is no guarantee that these investment strategies will work under all market conditions and each investor should evaluate their ability to invest for a long-term especially during periods of downturn in the market. No representation is being made that any account, product, or strategy will or is likely to achieve profits, losses, or results similar to those shown.

Opinions: The material contains statements of opinion and belief. Any views expressed herein are those of PIMCO as of the date indicated, are based on information available to PIMCO as of such date, and are subject to change, without notice, based on market and other conditions. No representation is made or assurance given that such views are correct. PIMCO has no duty or obligation to update the information contained herein.

Outlook: Statements concerning financial market trends or portfolio strategies are based on current market conditions, which will fluctuate. There is no guarantee that these investment strategies will work under all market conditions or are suitable for all investors and each investor should evaluate their ability to invest for the long term, especially during periods of downturn in the market. Outlook and strategies are subject to change without notice.

Past performance is not a reliable indicator of future results. Interests in any PIMCO fund mentioned in this publication are issued by PIMCO Australia Management Limited ABN 37 611 709 507, AFSL 487 505 of which PIMCO Australia Pty Ltd ABN 54 084 280 508, AFSL 246 862 is the investment manager (together **PIMCO Australia**). This publication has been prepared without taking into account the objectives, financial situation or needs of investors. Before making an investment decision investors should obtain professional advice and consider whether the information contained herein is appropriate having regard to their objectives, financial situation and needs. Investors should obtain a copy of the Product Disclosure Statement (**PDS**) and consider the PDS before making any decision about whether to acquire an interest in any PIMCO fund mentioned in this publication. PIMCO Australia has determined the target market for this product which is set out in the target market determination (**TMD**) published on our website. The current PDS and TMD can be obtained via www.pimco.com.au. This publication may include economic and market commentaries based on proprietary research, which are for general information only. PIMCO Australia believes the information contained in this publication to be reliable, however its accuracy, reliability or completeness is not guaranteed. Any opinions or forecasts reflect the judgment and assumptions of PIMCO Australia on the basis of information at the date of publication and may later change without notice. These should not be taken as a recommendation of any particular security, strategy or investment product. All investments carry risk and may lose value. To the maximum extent permitted by law, PIMCO Australia and each of their directors, employees, agents, representatives and advisers disclaim all liability to any person for any loss arising, directly or indirectly, from the information in this publication. No part of this publication may be reproduced in any form, or referred to in any other publication, without express written permission of PIMCO Australia. PIMCO is a trademark of Allianz Asset Management of America L.P. in the United States and throughout the world. © PIMCO, 2022.

Currency strategies are volatile and currency rates may fluctuate significantly over short periods of time and may reduce the returns of a portfolio.

Bloomberg Global Aggregate Index (AUD Hedged) is an unmanaged market index representative of the total return performance of major world bond markets on a AUD hedged basis. It is not possible to invest in an unmanaged index.